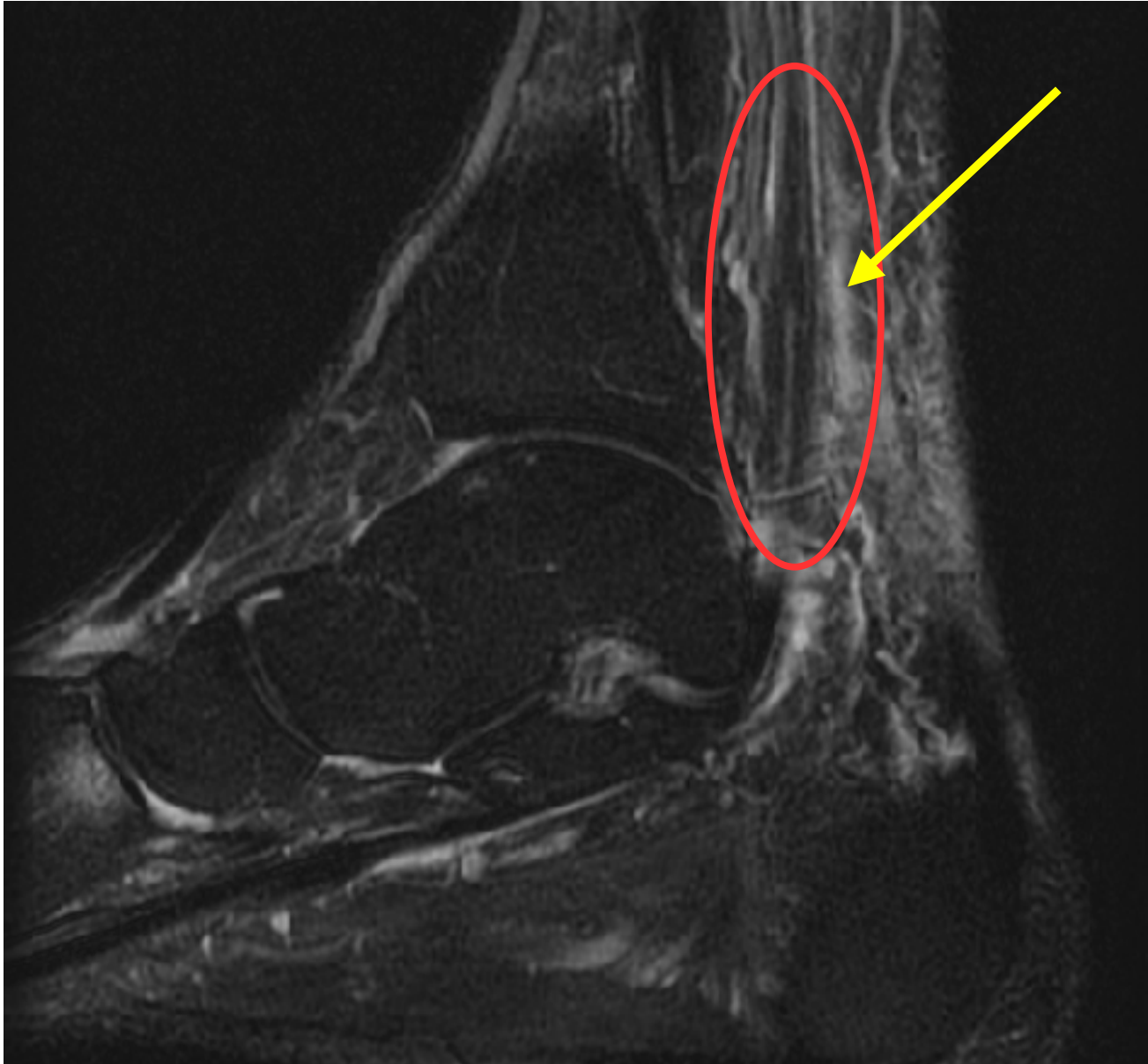




MUSCLE-TENDON INTERFACE TEAR

Personal patient walking across parking lot heard an sudden pop with pain to lower leg. Denied trauma or prior hint of a problem. Had continued pain with and without activity. Exam caused pain with motion of the ankle, but could be isolated to motion of the flexor tendon of the big toe. X-ray did not show anything. MRI showed a partial tear to the muscle-tendon junction of the flexor hallucis longus tendon. Patient refused surgical options. Patient maintained nonweightbearing, in cast, for 4 weeks. Patient went on to walk without compliant and healed uneventfully.

MRI RESULTS



CALL FOR APPOINTMENT TODAY!!

Specializing In Heel Pain

PAUL CLINT JONES, DPM
InStep Foot and Ankle

WASHINGTON ♦ IDAHO
instepfootandankle.com
866.926.5518 / 509.926.5518 / fax 509.922.9892